

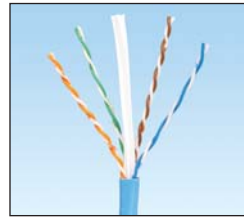
TX6000™ UTP Copper Cable

PANDUIT®

SPECIFICATION SHEET

specifications

Category 6 cable shall exceed IEC 61156-5 and ANSI/TIA-568-C.2 Category 6 component standards. The conductors shall be 23 AWG construction with HDPE insulation. The copper conductors shall be twisted in pairs, with all four pairs separated by a cross-divider and covered by a flame retardant PVC jacket.



technical information

Electrical performance:	Certified channel performance in a 4-connector configuration up to 100 meters and exceeds ISO 11801 2nd Edition Class E and ANSI/TIA-568-C.2 Category 6 standards at swept frequencies up to 250 MHz
	Certified component performance up to 100 meters and exceeds the component requirement of IEC 61156-5 and ANSI/TIA-568-C.2 Category 6 component standards at swept frequencies up to 250 MHz
Conductor/insulator:	23 AWG solid copper insulated with HDPE
Flame rating:	UL 1685
PoE compliance:	Meets IEEE 802.3af and IEEE 802.3at for PoE applications
Installation tension:	110 N (25 lbf) maximum
Temperature rating:	0°C to 50°C (32°F to 122°F) during installation -20°C to 60°C (-4°F to 140°F) during operation
Cable jacket:	Flame retardant PVC
Cable diameter:	5.7mm (0.225 in.) nominal
Cable weight:	11 kg/305m (24 lbs./1000 ft.)
Packaging:	305m (1000 ft.), reel in a box, 14 kg/305m (30 lbs./1000 ft.) Package tested to ISTA Procedure 1A

key features and benefits

Third party tested	Cable has been tested as part of the TX6000™ Copper Cabling System by an independent laboratory and complies with the electrical channel requirements of the following standards: ISO/IEC 11801 2nd Edition: 2002, EN 50173-1: 2002, and ANSI/TIA-568-C.2
Cross-divider	Separates pairs for exceptional cable performance
Reel-in-a-box	Ensures proper performance and provides quick installation
Tested beyond the standards	Cable has been characterized to 550 MHz, 300 MHz above the standard
Descending length cable markings	Easy identification of remaining cable reduces installation time and cable scrap

applications

TX6000™ UTP Copper Cable is a component of the Panduit® TX6000™ Copper Cabling System. Interoperable and backward compatible, this end-to-end system provides design flexibility to protect network investments well into the future. With certified performance to the ISO 11801 Class E and ANSI/TIA-568-C.2 Category 6 standards, this system is ideal for today's high performance workstation applications. Usage of the TX6000™ Copper Cabling System include:

- Ethernet 10BASE-T, 100BASE-T (Fast Ethernet), 1000BASE-T (Gigabit Ethernet), 10GBASE-T (10 Gigabit Ethernet over limited distances as specified in the industry 10GBASE-T standards)
- 155 Mb/s ATM, 622 Mb/s ATM, 1.2 Gb/s ATM
- Token Ring 4/16

www.panduit.com

TX6000™ Copper Cabling System

TX6000™ UTP Copper Cable

CM: PUC6004*

Mini-Com® TX6™ UTP PLUS Jack Module

Jack module: CJ688TG**

TX6™ PLUS UTP Patch Cords

Meter lengths: UTPSP^MY

Foot lengths: UTPSP^Y

DP6™ PLUS Angled Punchdown Patch Panels

24-port, 1 RU: DPA24688TGY

48-port, 2 RU: DPA48688TGY

DP6™ PLUS Flat Punchdown Patch Panels

12-port: DP12688TGY

24-port, 1 RU: DP24688TGY

48-port, 2 RU: DP48688TGY

GP6™ PLUS Category 6 Punchdown System

See website (www.panduit.com) or catalog for complete system information

Cable Prep Tools

Wire snipping tool: CWST

Wire stripping tool: CCAST

*For colors and pallet configurations, reference back page.

**To designate color, add suffix IW (Off White), EI (Electric Ivory), IG (International Gray), WH (White), BL (Black), OR (Orange), RD (Red), BU (Blue), GR (Green), YL (Yellow), or VL (Violet).

^For lengths 1 to 10 meters (increments of one meter) and 0.5, 1.5, 2.5, 15, 20, 25, 30, 35, 40 meters, change the length designation in the part number to the desired length. For standard cable colors other than Off White, add suffix BL (Black), BU (Blue), RD (Red), GR (Green), YL (Yellow), OR (Orange), or VL (Violet) after the M in the part number. For example, the part number for a blue 15-meter patch cord is UTPSP15MBUY.

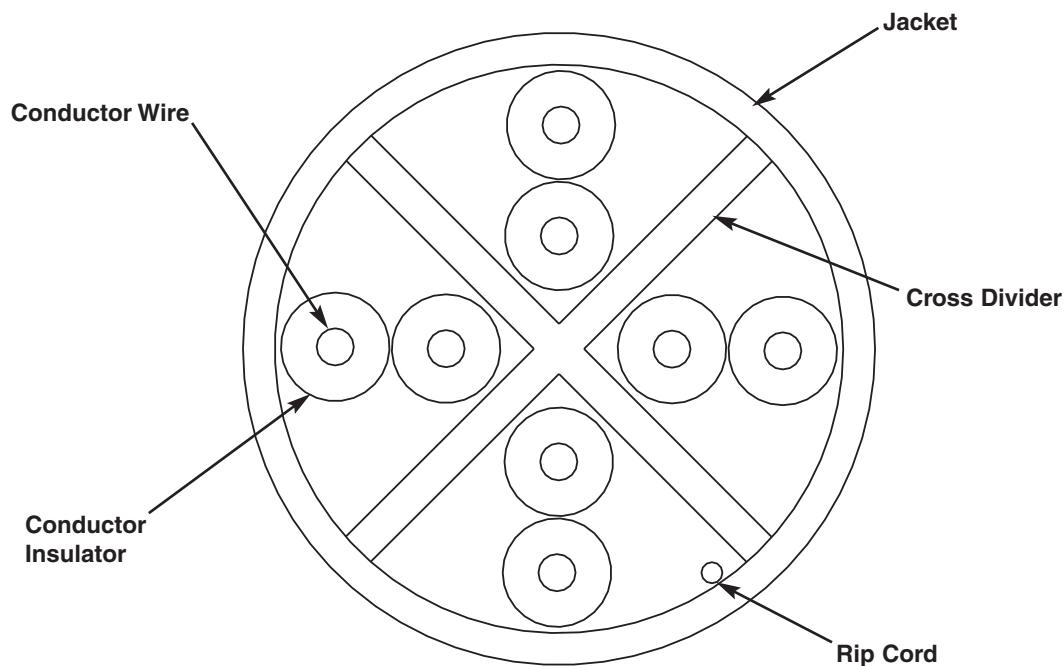
^^For lengths 1 to 10 feet (increments of one foot) and 0.5, 1.5, 2.5, 15, 20, 25, 30, 35, 40 feet, change the length designation in the part number to the desired length. For standard cable colors other than Off White, add suffix BL (Black), BU (Blue), RD (Red), YL (Yellow), GR (Green), OR (Orange), or VL (Violet) before the Y at the end of the part number. For example, the part number for a blue 5-foot patch cord is UTPSP5BUY.

TX6000™ UTP Copper Cable

Additional Specifications

Mechanical Test	
Ultimate Breaking Strength	>400 N (90 lbf)
Minimum Bend Radius	4 x cable diameter
Electrical Test	
DC Resistance	<9.38 Ohm per 100m (328 ft.)
DC Resistance Unbalance	<5%
Mutual Capacitance	<5.6 nF per 100m (328 ft.) at 1 kHz
Capacitance Unbalance	<330 pF per 100m (328 ft.) at 1 kHz
Characteristic Impedance	100 Ohm +/-15% up to 100 MHz
Nominal Velocity of Propagation (NVP)	67%

Cable Construction



Product Offering

Part Number	Packaging Configuration	Color
PUC6004BUY	Standard US Pallet (27 cartons/pallet, 9 cartons x 3 layers)	Blue
PUC6004IG-EY	Standard European Pallet (18 cartons/pallet, 6 cartons x 3 layers)	International Gray
PUC6004BU-J	Individual carton (Japan market only)	Blue

For other color or pallet configurations, contact customer service.

WORLDWIDE SUBSIDIARIES AND SALES OFFICES

PANDUIT CANADA
Markham, Ontario
cs-cdn@panduit.com
Phone: 800.777.3300

PANDUIT EUROPE LTD.
London, UK
cs-emea@panduit.com
Phone: 44.20.8601.7200

PANDUIT SINGAPORE PTE. LTD.
Republic of Singapore
cs-ap@panduit.com
Phone: 65.6305.7575

PANDUIT JAPAN
Tokyo, Japan
cs-japan@panduit.com
Phone: 81.3.6863.6000

PANDUIT LATIN AMERICA
Guadalajara, Mexico
cs-la@panduit.com
Phone: 52.33.3777.6000

PANDUIT AUSTRALIA PTY. LTD.
Victoria, Australia
cs-aus@panduit.com
Phone: 61.3.9794.9020

For a copy of Panduit product warranties, log on to www.panduit.com/warranty

For more information

Visit us at www.panduit.com

Contact Customer Service by email: cs@panduit.com
or by phone: 800.777.3300 and reference COSP141

PANDUIT®

©2011 Panduit Corp.
ALL RIGHTS RESERVED.

WW-COSP141

6/2011